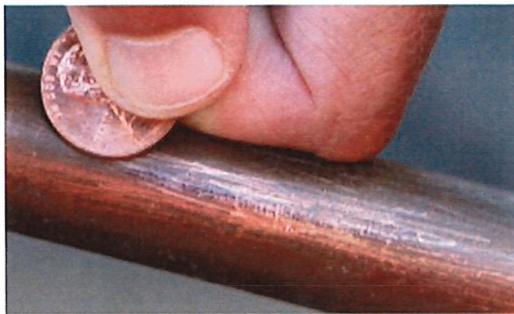




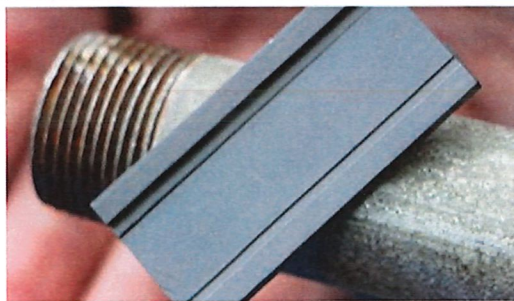
Lead Pipe

- A magnet will not stick to a lead pipe.
- Scratch the pipe with a coin. If the scraped area is shiny silver and flakes off, the service line is lead.



Copper Pipe

- A magnet will not stick to a copper pipe.
- Scratch the pipe with a penny. If the scraped area is copper in color, like a penny, your service line is copper.



Galvanized Steel Pipe

- If a magnet sticks to the surface, your service line is galvanized steel.
- A scratch test is not needed. If you scratch the pipe, it will remain a dull gray.

