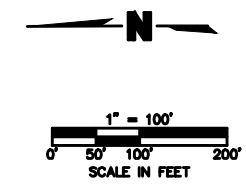
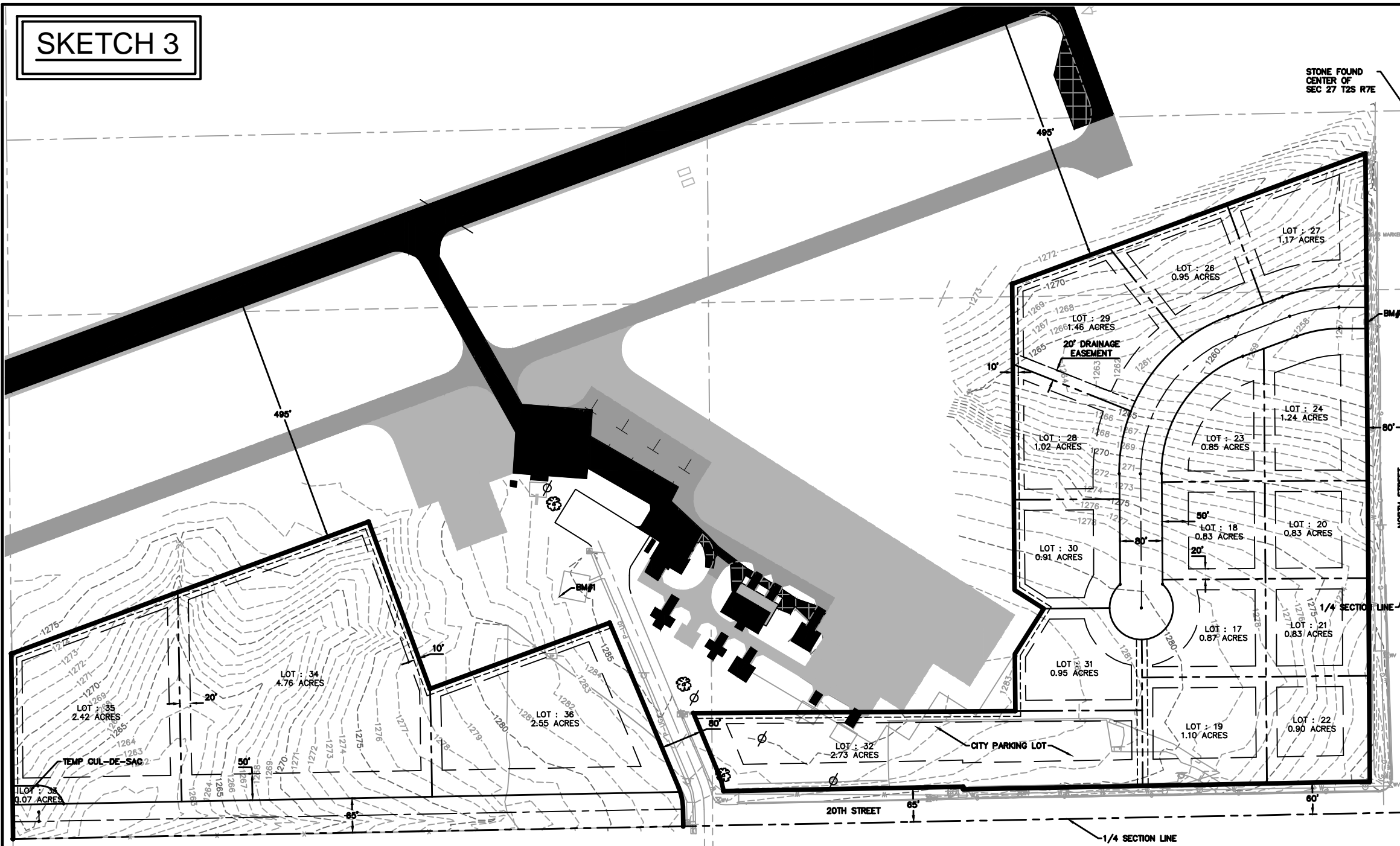
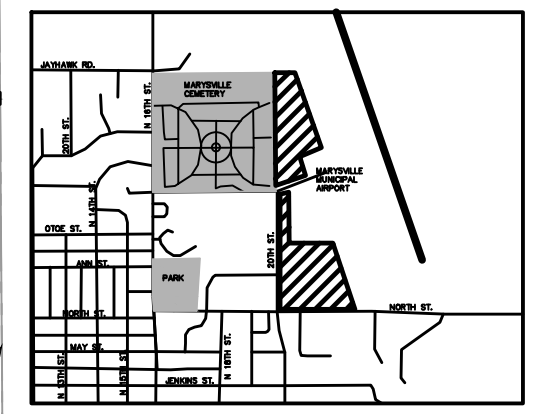


SKETCH 3



- LEGEND**
- ⊙ MONUMENT FOUND
 - 1/2" REBAR W/ LO-114 CAP TO BE SET IN CONC.
 - 1/2" REBAR W/ LO-114 CAP TO BE SET
 - SECTION LINE
 - BUILDING SET BACK
 - LOT LINE
 - EASEMENT
 - MAJOR CONTOUR
 - MINOR CONTOUR
 - WATER LINE
 - GAS LINE
 - P-UG UNDER GROUND ELECTRIC



REVIEW CERTIFICATE
 This Preliminary Plat has been reviewed and approved by:

DAVID RICHARDSON
 Zoning Administrator

BOB CARLSON
 Chair of Planning Commission

**PRELIMINARY PLAT
 MARYSVILLE AIRPORT
 BUSINESS &
 INDUSTRIAL PARK**

AN ADDITION TO THE CITY OF
 MARYSVILLE, MARSHALL COUNTY, KANSAS

PREPARED BY
OLSSON ASSOCIATES

2627 KFB Plaza, Suite 101W
 Manhattan, Kansas 66503-8154
 TEL 785.539.6900
 FAX 785.539.6901
 www.oaconsulting.com
 JUNE 2011

LEGAL DESCRIPTION
 A TRACT OF LAND IN THE NORTHWEST 1/4 OF SECTION 27, TOWNSHIP 2 SOUTH, RANGE 7 EAST OF THE SIXTH PRINCIPAL MERIDIAN, DESCRIBED AS FOLLOWS:
 BEGINNING AT A POINT XXXX FEET WEST OF THE CENTER OF SECTION 27, TOWNSHIP 2 SOUTH, RANGE 7 EAST OF THE SIXTH PRINCIPAL MERIDIAN, NORTH 80 FT TO THE POINT OF BEGINNING.
 THENCE XXXXXXXXXXXXXXXXXXXX
 THENCE XXXXXXXXXXXXXXXXXXXX
 THENCE XXXXXXXXXXXXXXXXXXXX
 THENCE XXXXXXXXXXXXXXXXXXXX
 THENCE XXXXXXXXXXXXXXXXXXXX
 THENCE XXXXXXXXXXXXXXXXXXXX
 THENCE XXXXXXXXXXXXXXXXXXXX
 THENCE XXXXXXXXXXXXXXXXXXXX
 THENCE XXXXXXXXXXXXXXXXXXXX
 THENCE XXXXXXXXXXXXXXXXXXXX
 THENCE TO THE POINT OF BEGINNING
 BEGINNING AT A POINT XXXX FEET WEST OF THE CENTER OF SECTION 27, TOWNSHIP 2 SOUTH, RANGE 7 EAST OF THE SIXTH PRINCIPAL MERIDIAN,
 THENCE XXXXXXXXXXXXXXXXXXXX
 THENCE XXXXXXXXXXXXXXXXXXXX
 THENCE XXXXXXXXXXXXXXXXXXXX
 THENCE XXXXXXXXXXXXXXXXXXXX
 THENCE XXXXXXXXXXXXXXXXXXXX
 THENCE XXXXXXXXXXXXXXXXXXXX
 THENCE XXXXXXXXXXXXXXXXXXXX
 THENCE XXXXXXXXXXXXXXXXXXXX
 THENCE XXXXXXXXXXXXXXXXXXXX
 THENCE XXXXXXXXXXXXXXXXXXXX
 THENCE TO THE POINT OF BEGINNING
 CITY OF MARYSVILLE, MARSHALL COUNTY, KANSAS, CONTAINING XXX ACRES, MORE OR LESS.

APPLICANT
 CITY OF MARYSVILLE, RICK SHAIN, CITY ADMINISTRATOR

FLOODPLAIN INFORMATION
 THE SUBJECT PROPERTY IS LOCATED IN "ZONE C - AREAS OUTSIDE 500-YEAR FLOOD" ACCORDING TO THE MARSHALL COUNTY, KANSAS FLOOD HAZARD BOUNDARY MAP, COMMUNITY NUMBER 200210B, PAGE 20, EFFECTIVE DATE JUNE 28, 1977.

BENCHMARK INFORMATION
 BM#1: NW CORNER OF THE HELIPAD
 ELEV: 1284.60
 BM#2: NW CORNER OF GRATED INLET APPROXIMATELY 900 FT EAST OF THE INTERSECTION OF NORTH AND 20TH STREET, 18 FT NORTH OF THE EDGE OF PAVEMENT.
 ELEV: 1255.30

ZONING
 CURRENT : A-P AIRPORT DISTRICT W/ AO AIRPORT HAZARD OVERLAY DISTRICT
 PROPOSED : I-2 GENERAL INDUSTRIAL DISTRICT W/ AO AIRPORT HAZARD OVERLAY DISTRICT

SURVEYOR'S CERTIFICATE
 STATE OF KANSAS) SS:
 COUNTY OF RILEY)
 I, the undersigned do hereby certify that I am a Registered Land Surveyor in the State of Kansas with experience and proficiency in land surveying, that the heretofore described property was surveyed and subdivided by me, or under my supervision, that all subdivision regulations of the City of Marysville, Kansas, have been complied with in the preparation of this plat, and that all the monuments shown herein actually exist and their positions are correctly shown to the best of my knowledge and belief.
 Given under my hand and seal at Manhattan, Kansas this ___ day of _____, 2011.



USER: pparish
 FUTURE_BASE
 EXBASE
 DWG: F:\Projects\011-0923_SVO\Preliminary_Plat\10923_PPLAT-3.dwg
 DATE: Jun 08, 2011 9:16am
 XREFS: GCW Seal
 110923_TOPO